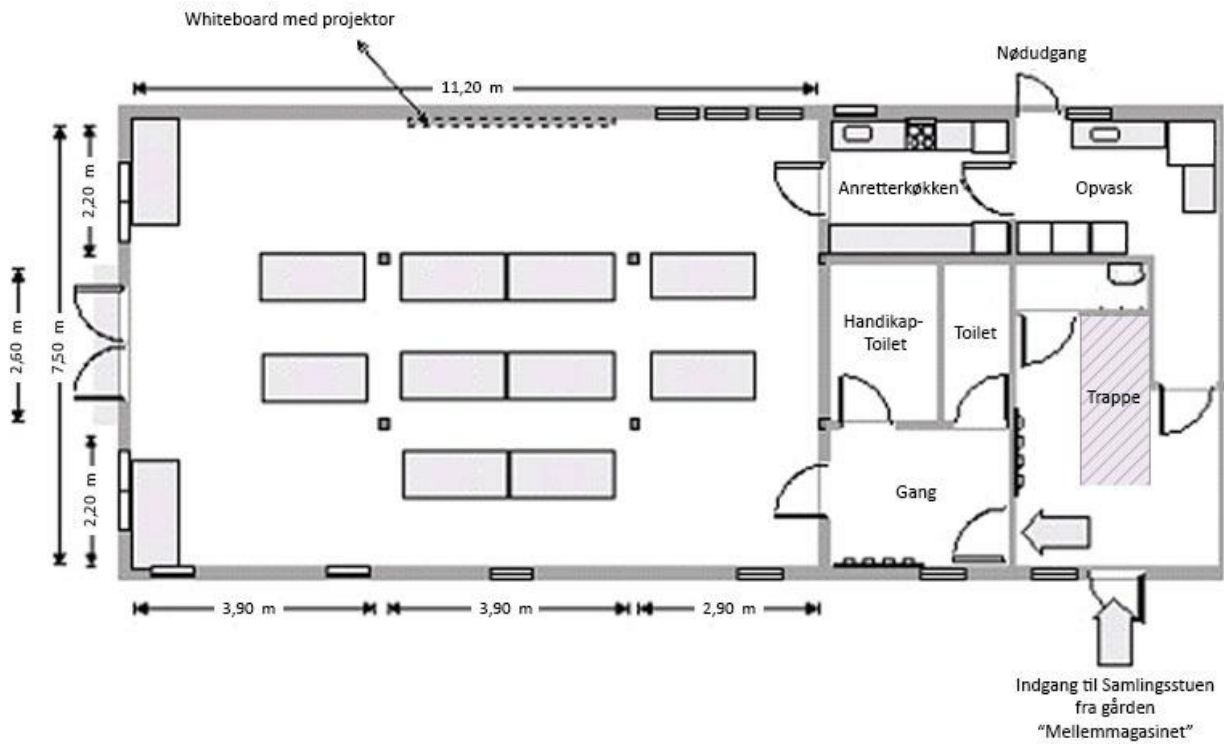
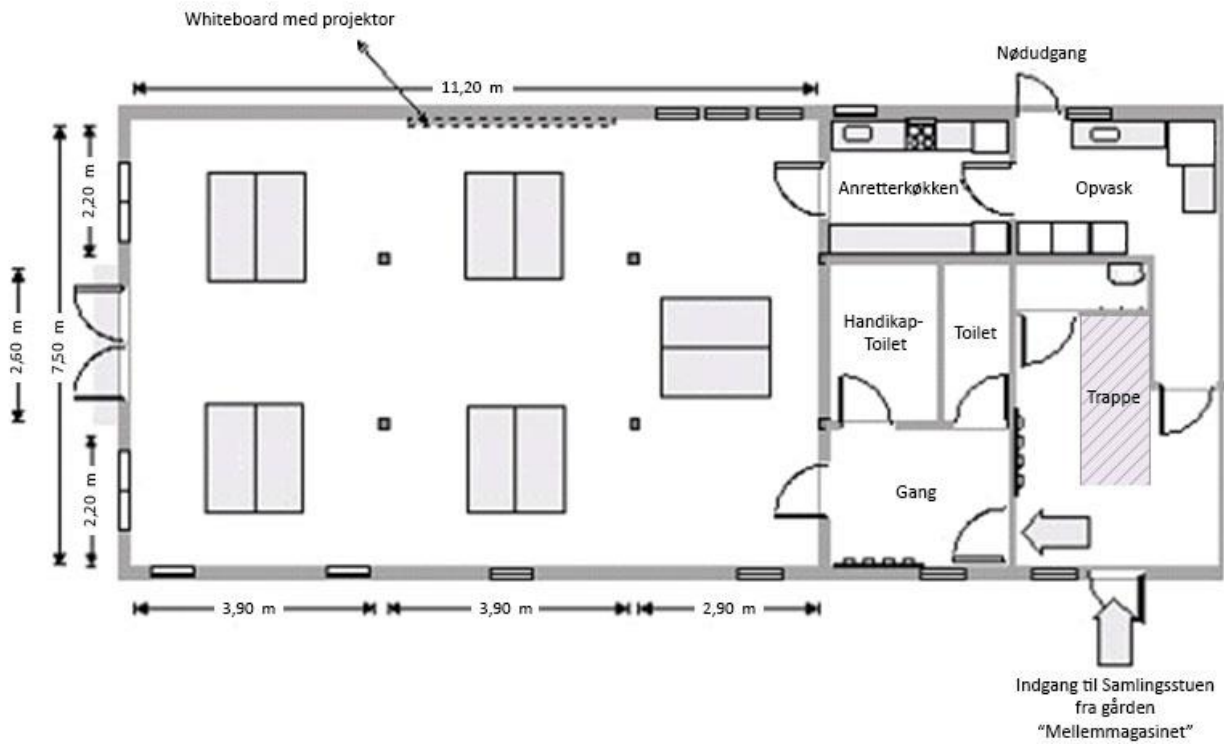


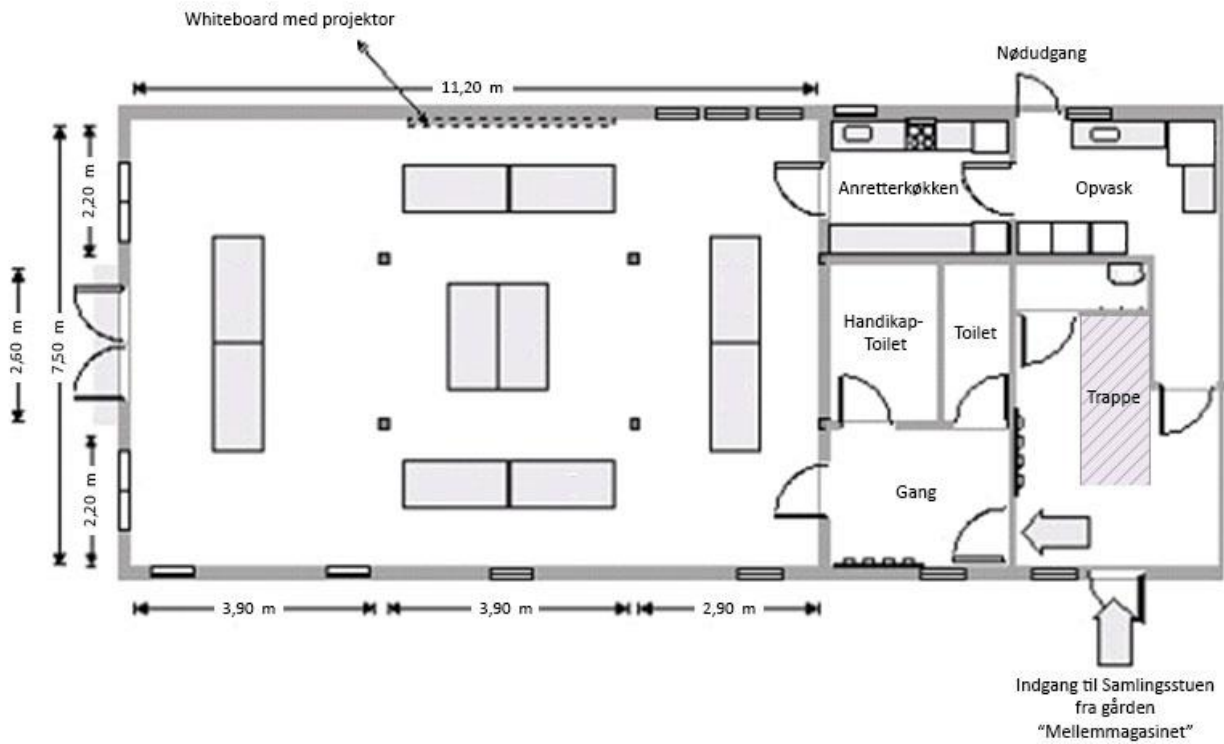
Samlingsstuen  
Opstillingseksempel: 60 personer  
Borde 90 x 180 cm



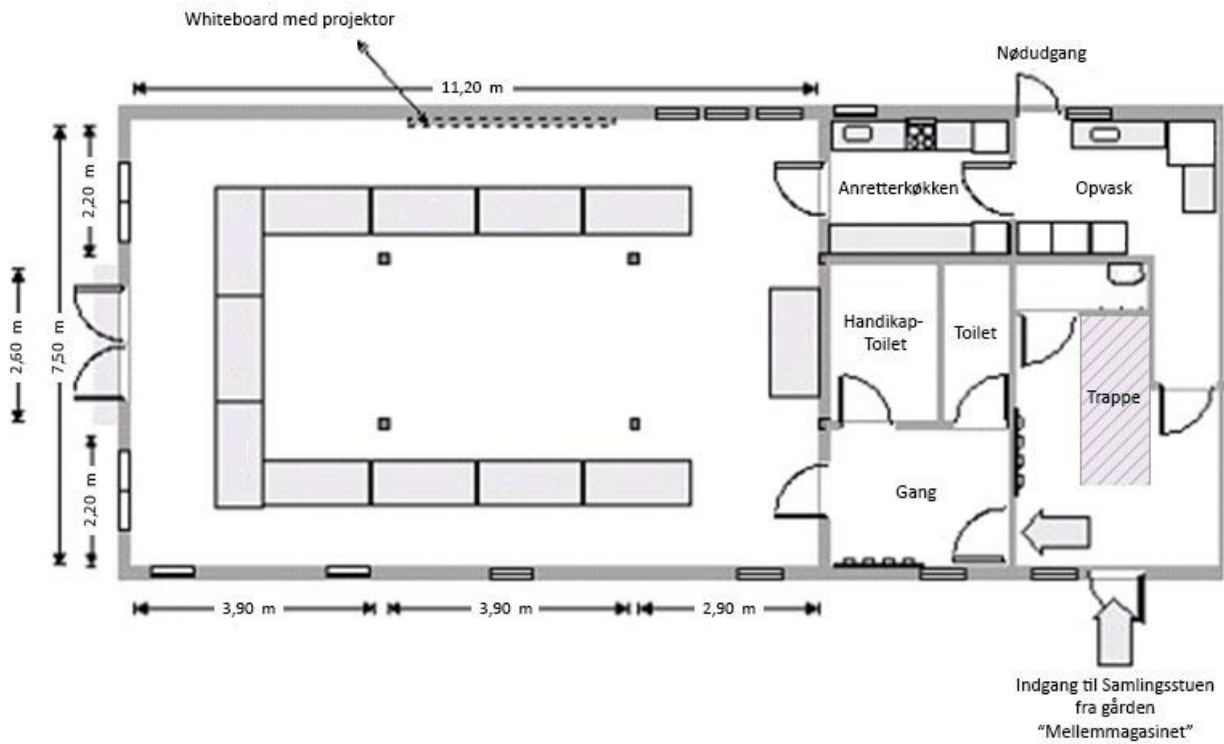
Samlingsstuen  
Opstillingseksempel: 50 personer  
Borde 90 x 180 cm



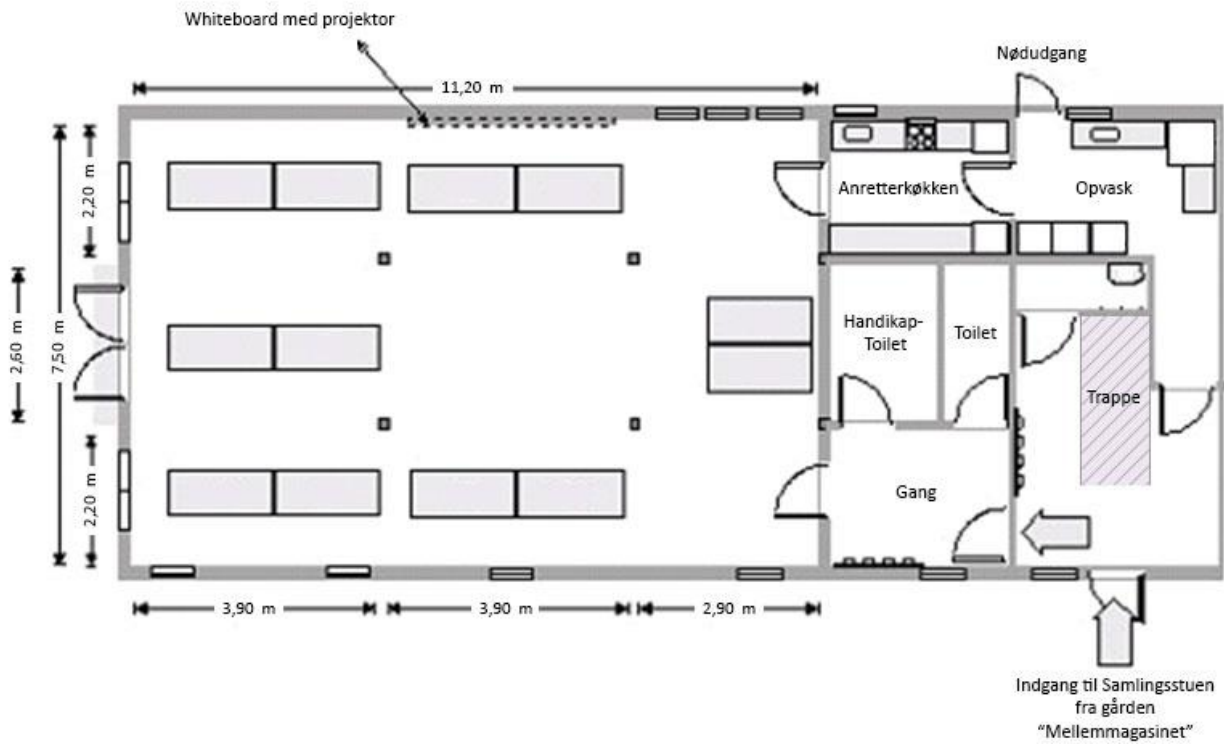
Samlingsstuen  
Opstillingseksempel: 66 personer  
Borde 90 x 180 cm



Samlingsstuen  
Opstillingseksempel: 66 personer  
Borde 90 x 180 cm



Samlingsstuen  
Opstillingseksempel: 70 personer  
Borde 90 x 180 cm



Samlingsstuen  
Opstillingseksempel: 70 personer  
Borde 90 x 180 cm

